



Kinosaki Onsen 48 HOUR ITINERARY

Kinosaki Onsen is a charming hot spring town known for its traditional ryokan (Japanese inns), scenic views, and relaxing onsen baths. Here's a comprehensive 48-hour itinerary, including travel directions from major cities and recommendations for activities and dining.

Getting to Kinosaki Onsen

FROM TOKYO STATION

OPTION 1:
TAKE THE SHINKANSEN (BULLET TRAIN) FROM TOKYO TO SHIN-OSAKA STATION, THEN TRANSFER TO THE LIMITED EXPRESS KOUNOTORI TO KINOSAKI ONSEN STATION. TOTAL TRAVEL TIME IS APPROXIMATELY 4.5 TO 5 HOURS.

OPTION 2:
TAKE THE SHINKANSEN FROM TOKYO TO HIMEJI STATION, THEN TRANSFER TO THE LIMITED EXPRESS HAMAKAZE TO KINOSAKI ONSEN STATION. THIS ROUTE TAKES AROUND 5 HOURS.

FROM OSAKA STATION

TAKE THE LIMITED EXPRESS KOUNOTORI DIRECTLY TO KINOSAKI ONSEN STATION. THE JOURNEY LASTS ABOUT 2.5 HOURS.

FROM KYOTO STATION

TAKE THE LIMITED EXPRESS KOUNOTORI FROM KYOTO TO KINOSAKI ONSEN STATION. EXPECT A TRAVEL TIME OF ABOUT 2.5 HOURS.



Day 1

ARRIVAL AND EXPLORATION

MORNING

Arrival at **Kinosaki Onsen Station**

Address: 357-1 Yushima, Kinosaki, Toyooka, Hyogo 669-6101, Japan

Lunch at **Orizunu Sushi Restaurant**

A short 10minute walk from Kinosaki Onsen Station

Address: 396 Kinosakicho Yushima, Toyooka, Hyogo 669-6101, Japan



AFTERNOON

First Stop: **Goshono-yu (The Palace Bath)**

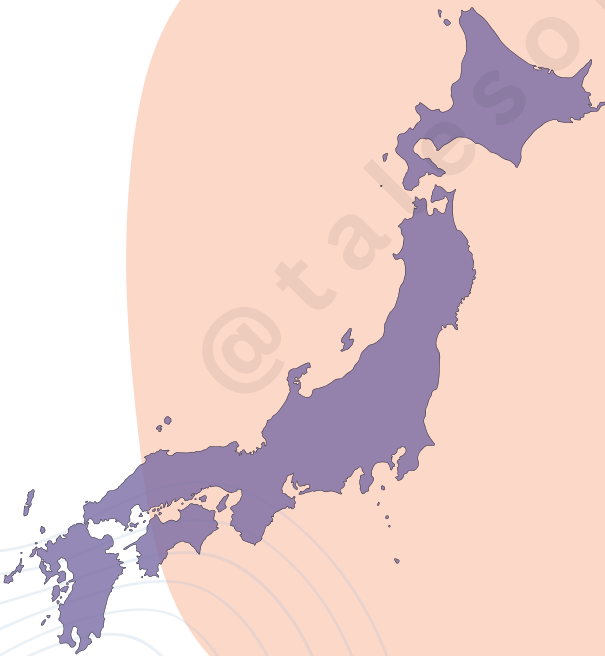
Address: 415-1 Yushima, Kinosaki, Toyooka, Hyogo 669-6101, Japan

ONSEN-HOPPING



PRO TIP #1:

If you're into collecting Japanese Railway and attraction stamps, each bath house has its own personalized stamp right in front! Some even have multiple!





Kinosaki Onsen 48 HOUR ITINERARY

Day 1 Continued...



AFTERNOON

Second Stop: **Sato-no-yu (The Village Bath)**

Address: 755 Yushima, Kinosaki, Toyooka, Hyogo 669-6101, Japan
Directions: Walk south along Yushima for 10 minutes.

Third Stop: **Yanagi-yu**

Address: 643 Yushima Kinosaki-cho, Toyooka, Hyogo 669-6101, Japan
Directions: Head back towards the station area, about 8 minutes' walk north from Sato-no-yu.



EVENING

Dinner at Sanpou Nishimuraya Honten

Address: 463-2 Yushima, Kinosaki-cho Toyooka City, Hyogo

Relaxing stroll along the Otani River : Take in the picturesque views of the river and the tranquil sounds of water as you wind down from the days activities.



PRO TIP #2: Some of the bath houses have foot baths in front where you can soak your feet after a long day of traveling!

Day 2

ROPEWAY ADVENTURE

MORNING

Kinosaki Onsen Ropeway

Address: 835 Kinosakicho Yushima, Toyooka 669-6101, Hyogo Prefecture

Snack on a Tajima Beef hot dog from the summit café while you take in the panoramic views.

AFTER A MORNING ENJOYING THE BREATHTAKING VIEWS FROM THE KINOSAKI ONSEN ROPEWAY, YOU HAVE THE OPPORTUNITY TO TAILOR THE REST OF YOUR DAY ACCORDING TO YOUR INTERESTS WITH TWO DISTINCT PATHS:

Option 1

Delve deeper into the rejuvenating world of Japanese hot springs with visits to two more of Kinosaki's famed onsens.

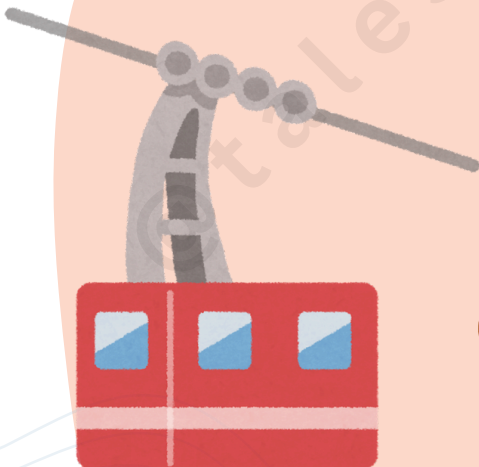
Fourth Stop: **Mandara-yu**

Address: 1103 Kinosakicho Yushima, Toyooka 669-6101, Hyogo Prefecture
Directions: A short 10-minute walk from the ropeway station.

Fifth Stop: **Ichino-yu**

Address: 573 Yushima Kinosaki-cho, Toyooka, Hyogo 669-6101, Japan
Directions: Continue walking southeast for about 5 minutes from Mandara-yu.

DIP INTO DELIGHT: A THERMAL TOUR OF KINOSAKI





Kinosaki Onsen 48 HOUR ITINERARY

Day 2 Continued...



PRO TIP #3:
Be sure to try the local specialty—onsen eggs. These eggs are slow-cooked in the naturally hot waters of the onsens, giving them a uniquely creamy and custard-like texture

Option 2

Switch gears and embrace nature by heading to Genbudo Park, where you can marvel at impressive volcanic rock formations in a series of caves. This excursion is ideal for those interested in geology or simply looking for a scenic outdoor adventure to complement the morning's tranquility.

Genbudo Park



Address: 1364-2 Akaishi, Toyooka 668-0041, Hyogo Prefecture

Directions: From the ropeway base, take a 15-minute taxi ride to explore the stunning volcanic rock cave formations.

ROCK ON: A GEOLOGIC JOURNEY THROUGH GENBUDO PARK

BOTH OPTIONS OFFER UNIQUE EXPERIENCES THAT HIGHLIGHT THE NATURAL BEAUTY AND CULTURAL RICHNESS OF KINOSAKI, ALLOWING YOU TO CUSTOMIZE YOUR JOURNEY ACCORDING TO YOUR MOOD AND INTERESTS.

AFTERNOON

Lunch at **Okotsu Ramen Tanuki**



Address: Japan, 〒669-6101 Hyogo, Toyooka, Kinosakicho Yushima, 391 木屋町小路 テナントD

Final Onsen Visit at **Jizou-yu**



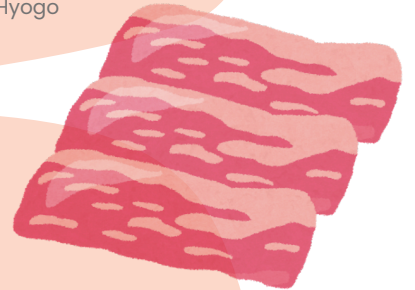
Address: 796 Yushima, Kinosaki, Toyooka, Hyogo 669-6101, Japan

EVENING

Dinner at **Tajima Beef Restaurant Ikuno**



Address: 835 Kinosakicho Yushima, Toyooka, Hyogo 669-6101, Japan
Directions: Just a few steps from Jizou-yu.



Departure Day

MORNING: CHECKOUT AND DEPARTURE

Enjoy a leisurely breakfast at your ryokan before heading back to the station.

THIS ITINERARY ENSURES YOU EXPERIENCE THE ESSENTIAL SIGHTS, RELAXATION, AND UNIQUE CULINARY DELIGHTS OF KINOSAKI ONSEN IN JUST TWO DAYS.

